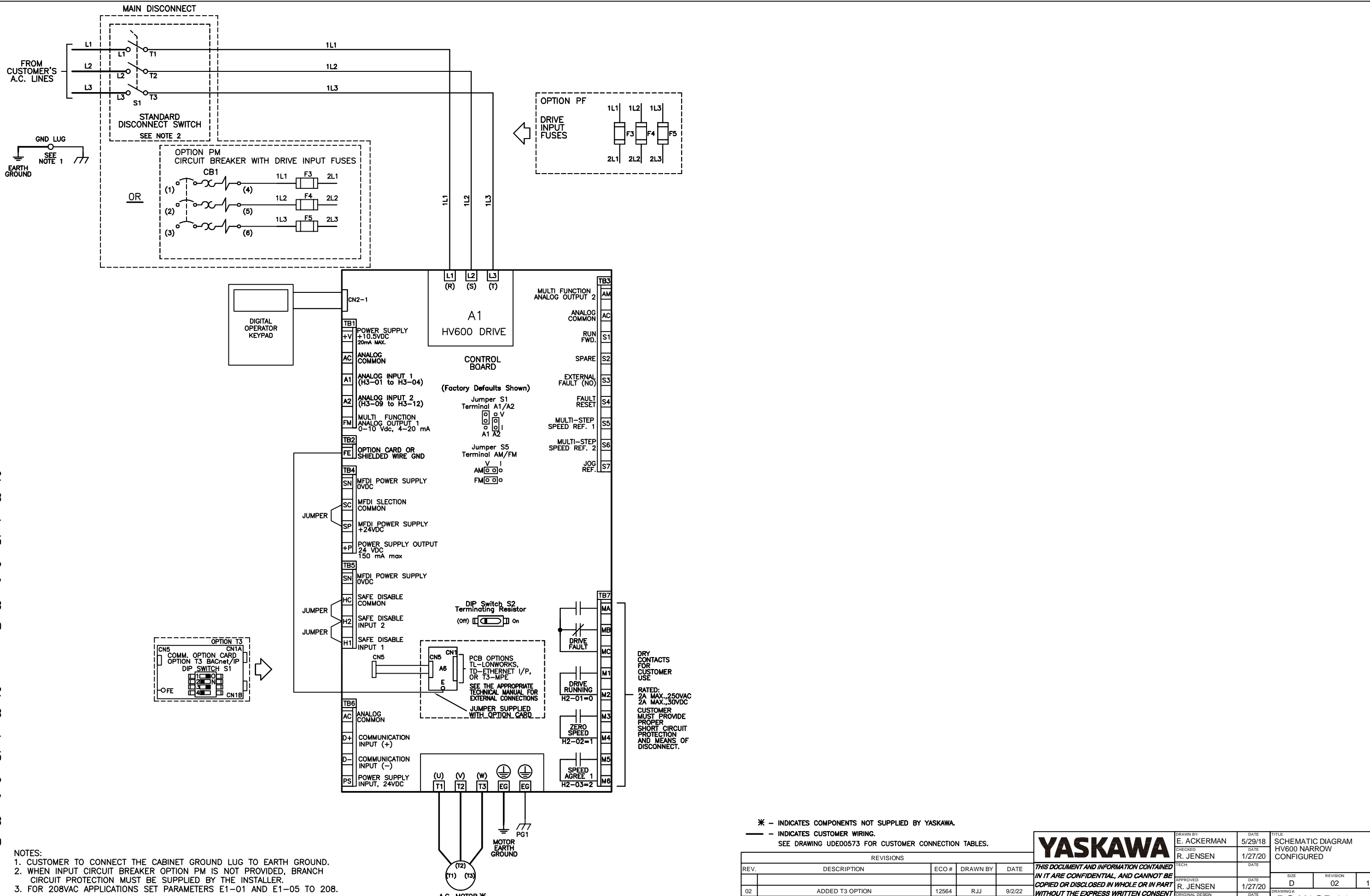


A
B
C
D
E
F
G
H
J
K

A
B
C
D
E
F
G
H
J
K



- NOTES:
1. CUSTOMER TO CONNECT THE CABINET GROUND LUG TO EARTH GROUND.
 2. WHEN INPUT CIRCUIT BREAKER OPTION PM IS NOT PROVIDED, BRANCH CIRCUIT PROTECTION MUST BE SUPPLIED BY THE INSTALLER.
 3. FOR 208VAC APPLICATIONS SET PARAMETERS E1-01 AND E1-05 TO 208.

* - INDICATES COMPONENTS NOT SUPPLIED BY YASKAWA.
 --- - INDICATES CUSTOMER WIRING.
 SEE DRAWING UDE00573 FOR CUSTOMER CONNECTION TABLES.

REVISIONS				
REV.	DESCRIPTION	ECO #	DRAWN BY	DATE
02	ADDED T3 OPTION	12564	R.JJ	9/2/22
01	CHANGED CN2-2 TO CN2-1 ON A1 CONTROL BOARD	10374	EAA	3/9/20

YASKAWA	DRAWN BY	E. ACKERMAN	DATE	5/29/18	TITLE	SCHEMATIC DIAGRAM				
	CHECKED	R. JENSEN	DATE	1/27/20		HV600 NARROW CONFIGURED				
	TECH		DATE		SIZE	D	REVISION	02	PAGE	1 of 1
	APPROVED	R. JENSEN	DATE	1/27/20	DRAWING #	DS.H6CP.01				
	ORIGINAL DESIGN	E. ACKERMAN	DATE	5/29/18						